

MANGROVE BAY, P.U.D.

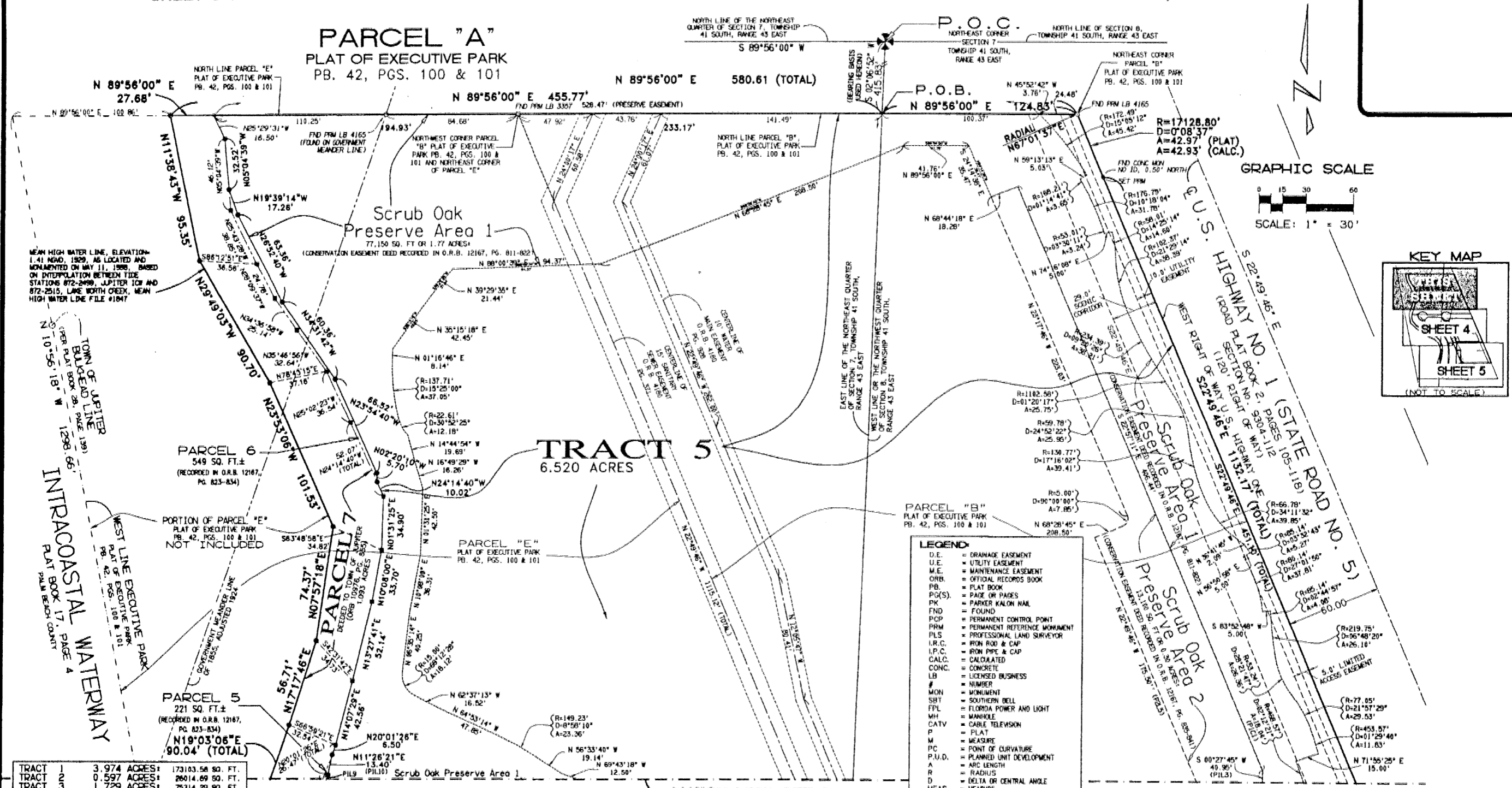
A PLANNED UNIT DEVELOPMENT

A REPLAT OF PARCELS "B", "C", AND A PORTION OF "E", OF THE PLAT OF EXECUTIVE PARK AS RECORDED IN PLAT BOOK 42, PAGES 100 AND 101, LYING IN SECTIONS 7 AND 8, TOWNSHIP 41 SOUTH, RANGE 43 EAST, TOWN OF JUPITER, PALM BEACH COUNTY, FLORIDA

SHEET 3 OF 5

DECEMBER, 2000

48



TRACT 1	3.974 ACRES	173103.56 SQ. FT.
TRACT 2	0.597 ACRES	26014.69 SQ. FT.
TRACT 3	1.723 ACRES	75314.29 SQ. FT.
TRACT 4	1.350 ACRES	102381.96 SQ. FT.
TRACT 5	6.520 ACRES	284027.96 SQ. FT.
TRACT 6	0.992 ACRES	43201.33 SQ. FT.
PARCEL 1	0.009 ACRES	403.90 SQ. FT.
PARCEL 2	0.007 ACRES	318.36 SQ. FT.
PARCEL 3	0.027 ACRES	1161.03 SQ. FT.
PARCEL 4	0.008 ACRES	349.83 SQ. FT.
PARCEL 5	0.005 ACRES	221.63 SQ. FT.
PARCEL 6	0.013 ACRES	549.23 SQ. FT.
PARCEL 7	1.093 ACRES	47624.83 SQ. FT.
TOTAL ACREAGE	17.385 AC	(SEE NOTICE)

NOTICE:
(ROUNDING OFF OF INDIVIDUAL PORTIONS WILL YIELD A DIFFERENT TOTAL)

- LEGEND:**
- D.E. = DRAINAGE EASEMENT
 - U.E. = UTILITY EASEMENT
 - M.E. = MAINTENANCE EASEMENT
 - O.R.B. = OFFICIAL RECORDS BOOK
 - P.B. = PLAT BOOK
 - PAGE(S). = PAGE OR PAGES
 - PK. = PARKER KALON NAIL
 - FND. = FOUND
 - PCP. = PERMANENT CONTROL POINT
 - PRM. = PERMANENT REFERENCE MONUMENT
 - PLS. = PROFESSIONAL LAND SURVEYOR
 - I.R.C. = IRON ROD & CAP
 - I.P.C. = IRON PIPE & CAP
 - CALC. = CALCULATED
 - CONC. = CONCRETE
 - LB. = LICENSED BUSINESS
 - #. = NUMBER
 - MON. = MONUMENT
 - SHT. = SOUTHERN WELL
 - FPL. = FLORIDA POWER AND LIGHT
 - WH. = MANHOLE
 - CATV. = CABLE TELEVISION
 - P. = PLAT
 - M. = MEASURE
 - PC. = POINT OF CURVATURE
 - P.U.D. = PLANNED UNIT DEVELOPMENT
 - A. = ARC LENGTH
 - R. = RADIUS
 - D. = DELTA OR CENTRAL ANGLE
 - MEAS. = MEASURE
 - Q. = CENTERLINE
 - NGVD. = NATIONAL GEODETIC VERTICAL DATUM
 - MHW. = MEAN HIGH WATER DATUM OF 1929
 - P.O.B. = POINT OF BEGINNING
 - P.O.C. = POINT OF COMMENCING
 - P.O.T. = POINT OF TERMINATION
 - ⊙. = SET IRC LB 4897
 - ⊙. = SET IRC LB 4897
 - ⊙. = SET IRC / AS NOTED
 - ⊙. = SET PRM LB 4897
 - ⊙. = SET PCP OR PK NAIL / AS NOTED
 - ⊙. = SET PRM AS NOTED

MATCH LINE: SEE SHEET 4

Keshavarz & Associates, Inc.
CONSULTING ENGINEERS - SURVEYORS
Licensed Business No. 4897
1280 N. Congress Avenue, Suite 206
West Palm Beach, Florida 33409
Tel: (561) 689-4600 Fax: (561) 689-7476
THIS INSTRUMENT WAS PREPARED BY MANUEL A. OYIBARRAZ, PSM
IN THE OFFICES OF KESHAVARZ & ASSOCIATES, INC.
PROFESSIONAL SURVEYOR AND MAPPER NO. 4102